

K CONTROL COATER

30-01-01, 30-02-01



The **K Control Coater** widely used for the application of paints, varnishes, adhesives, liquid printing inks and many other surface coatings to produce quick, accurate and repeatable samples. These may then be used for quality control and presentation purposes, R& D and computer colour matching data etc. These are elements vital to a company's success in the modern world.



▲ MODEL 101



▲ MODEL 202

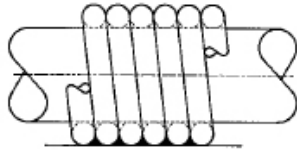
MAIN FEATURES

- Controlled speed and pressure ensure repeatable results
- Coating by wire wound bars or gap applicators
- Easy to use, easy to clean
- Vacuum, magnetic, heated and glass beds available
- Two models offering coated areas up to
 - 170 x 250mm (6.7 x 9.8 in)
 - 325 x 250mm (12.8 x 9.8 in)
- Multiple coatings in one operation for comparison purposes
- Standard coating speeds infinitely variable between 2 and 15m/min

METER BAR COATING

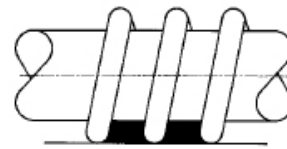
Meter bars provide the simplest method of applying accurate, repeatable layers of surface coatings on to most substrates. A meter bar is produced by winding precision drawn stainless steel wire on to a stainless steel rod resulting in a pattern of identically shaped grooves. These grooves then precisely control the wet film thickness. Close wound bars will produce coating thickness from 4 to 120µm. Higher coating weights up to 500µm can be obtained using spirally wound bars. A three-part Melinex/foam/rubber coating bed is supplied as standard. Vacuum, magnetic, heated and glass beds are also available, as detailed on the back.

STANDARD K101 AND K202 METER BARS



Close Wound

BAR No.	COLOUR CODE	WIRE DIAMETER		WET FILM DEPOSIT	
		INS	MM	INS	µm
0	White	0.002	0.05	0.00015	4
1	Yellow	0.003	0.08	0.00025	6
2	Red	0.006	0.15	0.0005	12
3	Green	0.012	0.31	0.0010	24
4	Black	0.020	0.51	0.0015	40
5	Horn	0.025	0.64	0.0020	50
6	Orange	0.030	0.76	0.0025	60
7	Brown	0.040	1.00	0.0030	80
8	Blue	0.050	1.27	0.0040	100
9	Tan	0.060	1.50	0.0050	120



Spirally Wound

BAR No.	WIRE DIAMETER		WET FILM DEPOSIT	
	INS	MM	INS	µm
150	0.010	0.25	0.006	150
200	0.014	0.36	0.008	200
300	0.020	0.51	0.012	300
400	0.030	0.76	0.016	400
500	0.040	1.00	0.020	500

Special bars to apply intermediate wet film deposits are manufactured to customer requirements. We stock wire diameters giving the choice of the following deposits (microns) when close wound.

4, 6, 8, 10, 12, 14, 16, 18, 20, 22, 24, 26, 28, 30, 32, 34, 36, 38, 40, 42, 44, 46, 48, 50, 52, 54, 56, 58, 60, 62, 64, 66, 68, 70, 72, 76, 80, 84, 88, 90, 92, 96, 100, 104, 108, 110, 112, 116, 120, 128, 130, 140, 150.

We also manufacture both wired metering bars and plain smoothing bars to fit all laboratory and production width coaters.

COATING AREAS. ALL DIMENSIONS IN MM.

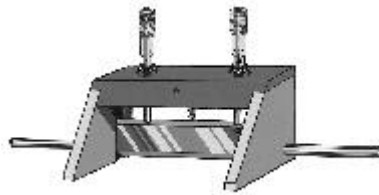
All dimensions are in mm.	MODEL NO.	
	101	202
MAXIMUM COATING AREA WHEN USING:-		
METER BAR COATING WITH STANDARD (THREE-PART) BED	170x 250	325 x 250
METER BAR COATING WITH GLASS BED	170 x 250	325 x 250
METER BAR COATING WITH VACUUM BED TYPE A	140 x 250	290 x 250
METER BAR COATING WITH VACUUM BED TYPE B	150 x 250	300 x 250
METER BAR COATING WITH MAGNETIC BED	150 x 250	300 x 250
METER BAR COATING WITH HEATED BED	170 x 250	325 x 250
MICROMETER ADJUSTABLE APPLICATOR	100 x 250	200 x 250
BIRD APPLICATOR	100 x 250	100 x 250
CUBE FILM APPLICATOR	41 x 250	41 x 250
4-SIDED APPLICATOR	60 x 250	60 x 250
K WEDGE BAR	100 x 250	200 x 250



GAP APPLICATORS

A range of adjustable or fixed gap applicators is available for use with the Control Coater. These are widely used for higher viscosity or thixotropic materials and for high coat weights.

MICROMETER ADJUSTABLE APPLICATOR



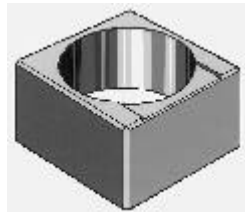
This applicator incorporates an adjustable spreading blade with micrometers to accurately set the substrate/blade gap from 0 - 10mm in 10 μ m increments, providing a most versatile tool. It gives a coating width of 100 mm or 200mm and produces a wet film thickness of 50-80% of the gap setting.

BIRD APPLICATOR



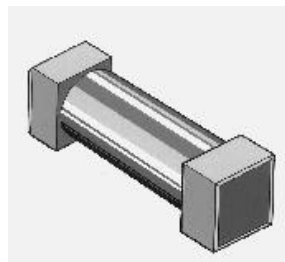
Precision ground all over, these stainless steel applicators provide a coating width of 100mm and are available with gap sizes of 25, 50, 75, 100, 150 or 200 μ m. These wet film thickness produced is 50-80% of the gap size.

CUBE FILM APPLICATOR



Made of precision ground stainless steel, the cube film applicator provides a coating width of 41mm. Each applicator is supplied with two gap sizes:- 50 and 100 μ m or 150 and 200 μ m. The wet film thickness is about 50% of the gap size.

4-SIDED APPLICATOR



This device enables the user to coat four separate film thicknesses with a single applicator. Providing a coating width of 60mm, the 4-sided applicator is supplied approximately equal to 50% of the gap size and providing a wet film thickness of half the gap size.

K-WEDGE BAR



The K Wedge Bar is an economical form of fixed gap applicator, produced by winding wire on to a stainless steel rod, as illustrated. Gaps between 50 μ m and 1500 μ m are available in 50 μ m steps. The wet film thickness is approximately equal to gap size and a coating width of 100mm or 200mm is produced.



SPECIAL PURPOSE COATING BEDS

Specialised coating beds are available to ensure the best possible results for particular applications. Each is suggested for different types of substrate.

SPECIFICATION

	K101	K202
Model	30-01-01	30-02-01
Weight	27kg (59 lb)	30kg (66 lb)
Footprint	All 400 x 450 mm (16 in x 17 in)	
Drives	All available with electrical drive of 110/220 volts or with pneumatic drive suitable for hazardous areas.	

TO ORDER PLEASE SPECIFY:

1. Machine size - Model 101 or 202
2. Type of drive - Electric or Air
3. Coating heads and accessories
4. Services available - Power at 200/250 or 100/120 volts, 50 or 60 Hz, Single Phase or Compressed air at 5.5 Bar (80 psi)

VACUUM BEDS – A & B

TYPE A.

Recommended when coating on to a delicate or stretchy substance such as aluminium foil or polythene. This is a rubber faced bed connected to a vacuum pump which holds the material perfectly flat. Vacuum is applied from the edges of the substrate only.

TYPE B.

A smooth aluminium faced bed with vacuum applied via multiple holes over the entire substrate surface. This is suitable for more rigid substances, and especially recommended when coating on to paint charts with gap applicators.

MAGNETIC BED – C

For use when coating on to magnetic substrates such as tin plate, to ensure a totally flat surface. Permanent magnets are used, which are operated by an on/off key.

HEATED BED – D

Specialised for applying coatings which require heating. Examples include hot melts and electrographic inks. The bed has a smooth aluminium face which can be heated up to 150° degrees and is set by a digital temperature controller.

GLASS BED (NOT ILLUSTRATED)

This provides a perfectly flat surface which is very easily cleaned. It is especially recommended for gap applicators which provide a hard surface.

Main Headquarters

Testing Machines Inc.
2 Fleetwood Court
Ronkonkoma, NY 11779
Tel: (631) 439-5400
Fax: (631) 439-5420
Info@testingmachines.com

Messmer Instruments
Unit F1 Imperial
Business Estate
West Mill, Gravesend
Kent DA11 0DL UK
Tel: +44 (0) 1474 566488
Fax: +44 (0) 1474 560310

Büchel BV
Fokkerstrat 24,
3905 KV
Veenendaal,
Netherlands
Tel: +33 (0)318 521500
Fax: +33 (0)318 5400358

**Lako Tool and
Manufacturing Inc.**
7400 Ponderosa Road
Perrysburg, Ohio 43552
Tel: (419) 662-5256
Fax: (419) 662-8225

Lawson Hemphill
1658 G A R Highway
Swansea, MA 02777
Tel: (508) 679-5364
Fax: (508) 679-5396
Information@
lawsonhemphill.com

**Adamel Lhomargy
SARL**
Z.A. de l'Habitat,
Bâtiment 6 Route
d'Ozoir, 77680
Roissy en Brie, France
Tel: +33 (0) 1 6440291
Fax: +33 (0) 1 64409211

TMI Canada
P.O. Box 203
Pointe-Claire Dorval
QC, H9R-4N9 CAN
Tel: (514) 426-5855
Fax: (514) 426-1557

